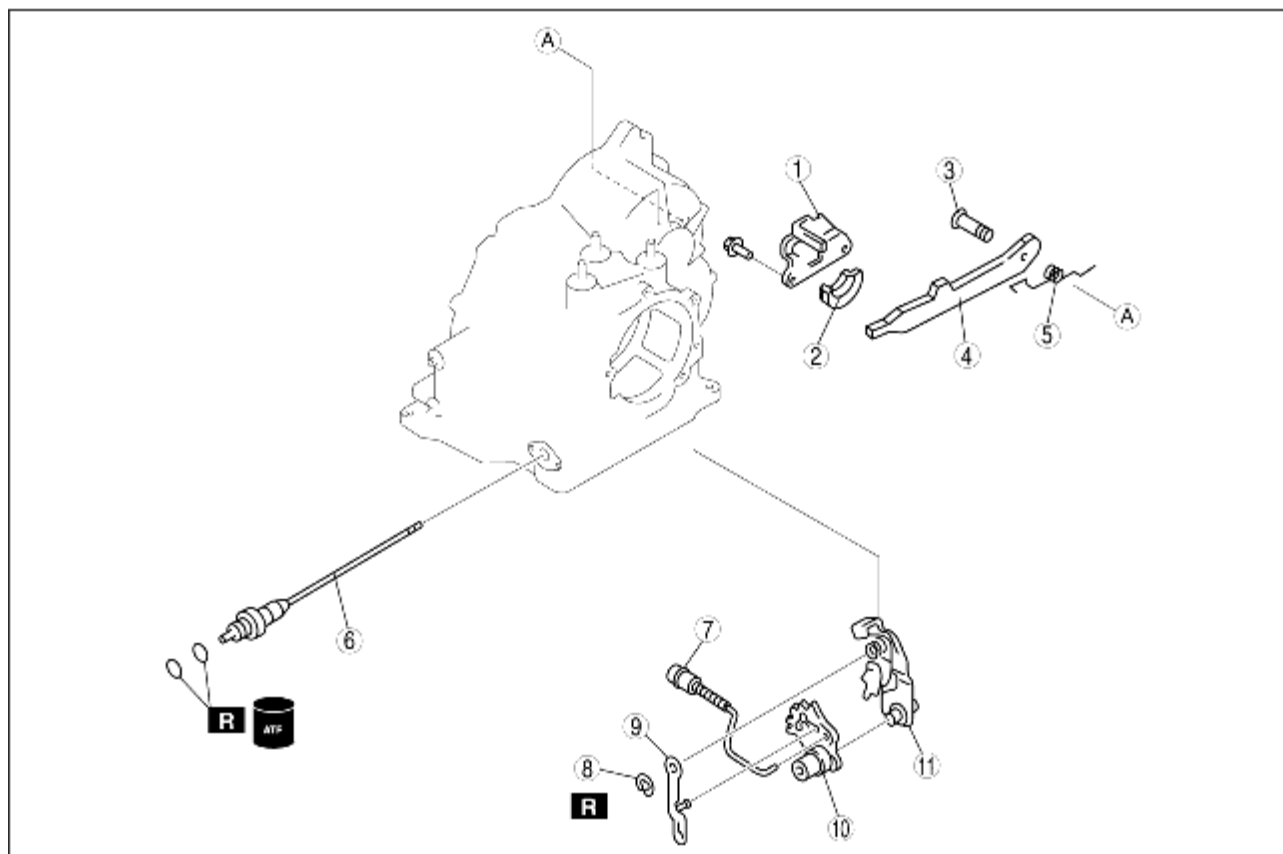


PARKING MECHANISM DISASSEMBLY/ASSEMBLY

B3E051721400A01

1. Disassemble in the order indicated in the table.
2. Assemble in the reverse order of disassembly.



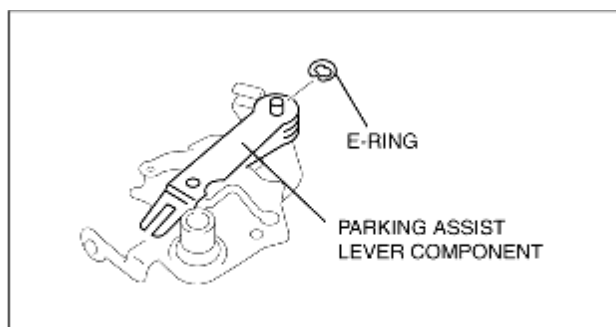
B3E0517A135

1	Actuator plate
2	Support actuator
3	Parking pawl shaft
4	Parking pawl
5	Pawl return spring
6	Manual shaft
7	Parking rod component
8	E-ring
9	Parking assist lever component
10	Manual plate
11	Detent bracket component

Assembly Procedure

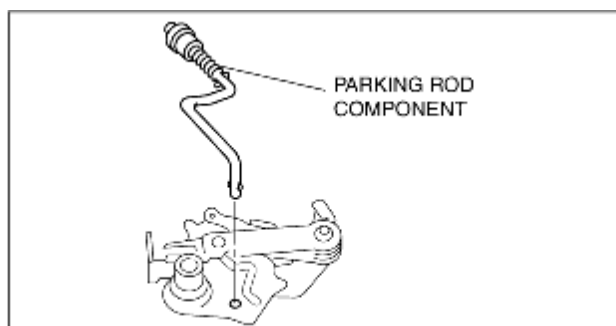
1. Install the manual plate to the detent bracket component.

2. Install the parking assist lever component to the detent bracket component and the manual plate.
3. Install the E-ring.



B3 E0517 A137

4. Install the parking rod component.



B3 E0517 A138